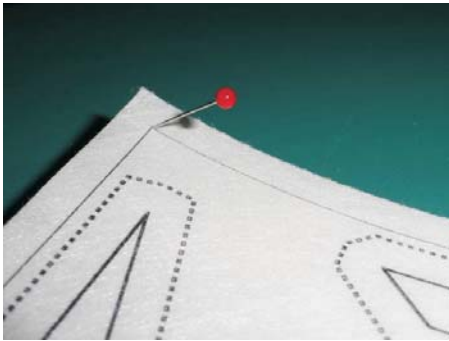


## Foundation Piecing How-to #1 PREPARING THE FOUNDATIONS

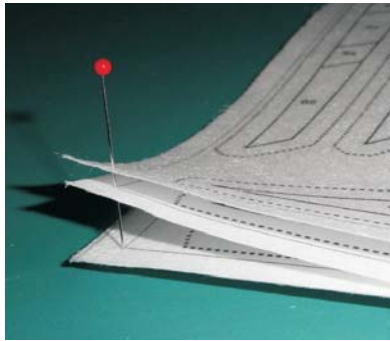
The foundation patterns on this site were all sew with *Ricky Tims Stable Stuff* (8½ by 11-inch sheets) which is a polyester paper that can be used to print out the foundations not only on an ink jet printer but also on a laser printer (unique to this brand alone). The beauty of this product, and any poly paper, is that you don't have to rip it out. It will dissolve in the quilt if you wash it. As a result all the photos are shown with *Stable Stuff*. You can use any other poly paper as long as you use an ink-jet printer.

If you would like to buy this product go to :  
[www.rickytims.com](http://www.rickytims.com)

- 1 All the foundation pages in this web site have a square drawn around them to make it easier to cut the foundations out. Just pin in the corner to stack up all the copies precisely so that you can cut all the foundations at once. Leave the pins sticking up so that the pages don't shift.



Pin in the corner

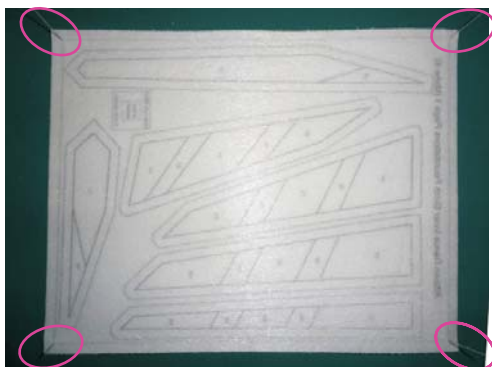


Pin through all sheets

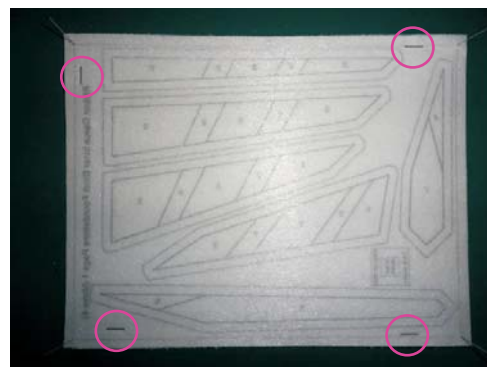


Turn over

- 2 Once you have all four corners pinned, turn the stack over so that the pins are sticking up. If the pins aren't perpendicular to the sheets, the sheets could shift, so make sure that they are sticking up throughout the stapling at this stage. Staple all the pages together. Make sure that your staples are placed outside the foundations. Remove the pins after stapling.



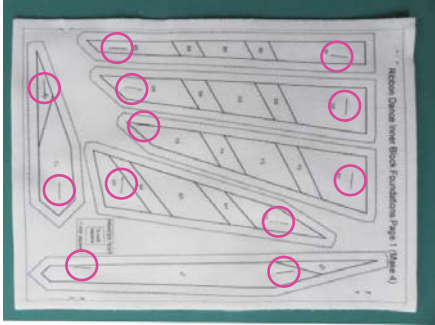
Pins stick up



Staple avoiding foundations

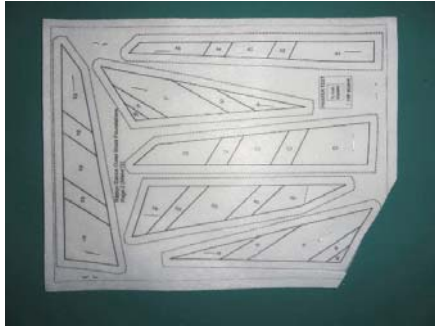
- 3 Turn the stack over again and staple in the middle of each foundation. For long foundations, use two staples.

Staple inside the foundations



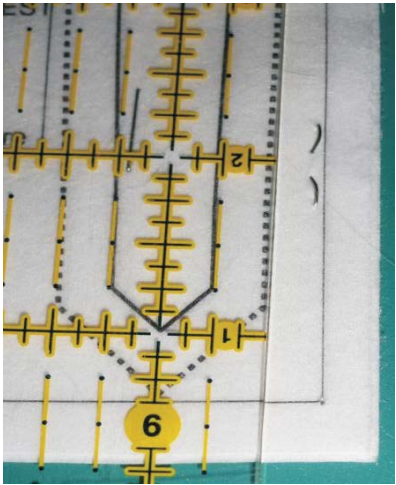
- 4 Trim all pages at once.

All sheets cut together

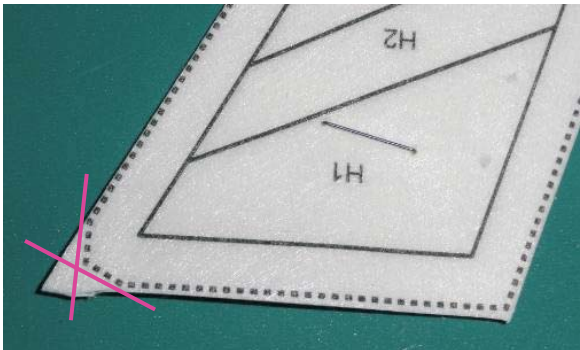


- 5 Trim the foundations just outside the printed lines. It's a little bit too big but since I tear the seam allowance away after I join the foundations, this extra doesn't matter. However, I like to keep track of the printed seam allowance just in case I have to make a small adjustment later on. You can always remove but you can't add.

Ruler placement

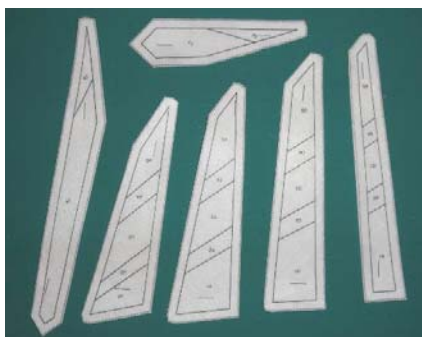


- 6 Take special care when cutting the engineered corners. These angles make it much easier when it comes to joining the foundations.

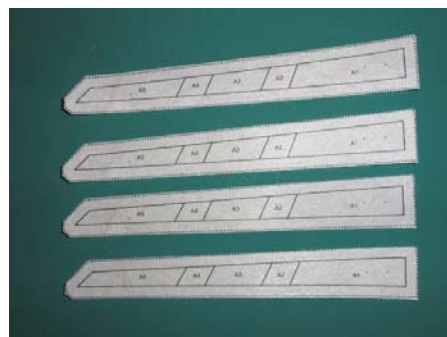


Engineered corners

- 7 Once you have cut out all the foundations, carefully remove the staples.



All foundations cut



Staples removed on one of the foundations

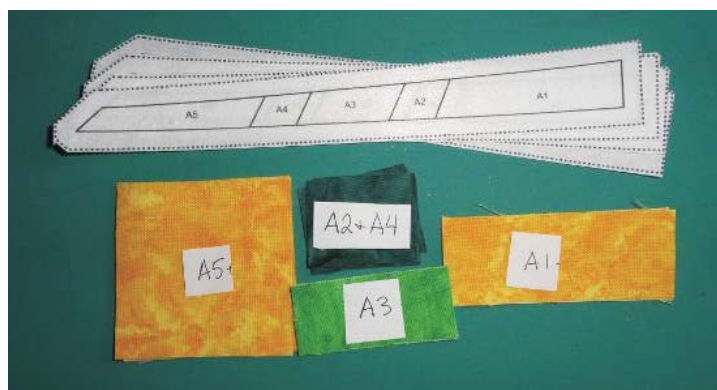
- 8 Using the cutting chart, cut all the fabric patches and label each group as you go. Then place in a zip-lock bag according to colour. Squeeze out the air, by placing a book over the bag, then seal it. Now you can store them until you are ready to sew.

When the air is removed, it helps keep the labels and fabric together so you don't need to tape the labels to the patches. But you still have to keep the bag flat.

Stored fabric patches



- 9 When you are ready to sew, take out all the patches involved in the foundation. Place with the foundation on your sewing table. This way you can keep the patches organized so you don't confuse them with other foundations.



Foundation and fabric patches ready to sew